



OFFICERS

BERNARD LOUIS RIEDEL

"Bernie"

Class President, Football, Basketball, Mushball, Hi-Y Treasurer, Student Council Treasurer, Junior Play, Senior Play, Spotlight Staff.

EVELYN VIRGINIA FISCHER

"Evelyn"

Commercial Club, Girl Reserves, Messenger Staff, National Honor Society, Choral Club, Junior Play, Senior Play, Band, Senior Class Treasurer.

ROSE ELIZABETH FANKHAUSER

"Rosa"

Girl Reserves, Home Economics Club, National Honor Society, Messenger Staff, Glee Club, Spotlight Staff, Astronomy Club, Journalism Club, Band "2", "3", Senior Play, Junior Play.

EMIL EDWARD KRZNARIC

"Camel"

Student Council—President "4", Hi-Y Club, National Honor Society, Football, Basketball, Junior Play, Senior Play.

ROY A. FITZ

"Fit"

Astronomy Club, Messenger Staff, Journal Play.

FLORENCE

"Flo"

Valedictorian, Journal Club, National Honor Society, Girl Reserves, Band Meet "2".

WILLIAM HE

"Ene"

Hi-Y—President, Vice President, National Honor Society, Astronomy Club, Spotlight Staff, Football Meet National Honor Club.

FRANCES MA

"Fr"

Salutatorian, Cor "2", "3", "4", Student Council "3", National H

JOHN KEN

Football, Basketball Play.

**ROY A. FITZGERALD, JR.**  
"Fitzy"

Astronomy Club, Hi-Y Club, Messenger Staff, Journalism Club, Junior Play.

**FLORENCE DALE BLACK**  
"Florence"

Valedictorian, Journalism Club, National Honor Society, Spotlight Staff, Girl Reserves, Band "2", "3", Literary Meet "2".

**WILLIAM HENRY SCHULTZ**  
"Energetic"

Hi-Y—President, Student Council—Vice President, Marnoc Club, Astronomy Club, Spotlight Staff, Messenger Staff, Football Manager, Senior Play, National Honor Society, Journalism Club.

**FRANCES MATILDA BENNETT**  
"Frances"

Salutatorian, Commercial Club, Band "2", "3", "4", Girl Reserves Club, Student Council "3", Literary Meet "3", National Honor Society.

**JOHN KENNETH MASON**  
"Brick"

Football, Basketball, Hi-Y, Senior Play.

**MARY MARGARET BLAKE**  
"Blake"

Commercial Club, Messenger Staff, Girl Reserves Club, Cheerleader "3", "4", Choral Club "1", "2".

**THOMAS HOFFMAN**  
"Buck"

Commercial Club, Hi-Y Club, Journalism Club, Student Council, National Honor Society, Messenger Staff, Spotlight Staff, Class Treasurer "3".

**ELIZABETH ROSE LEEDS**  
"Sil"

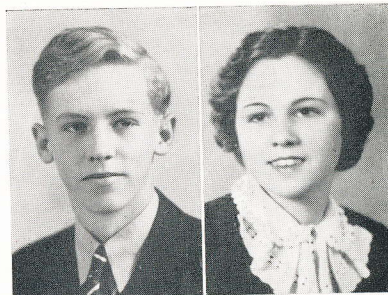
Home Economics Club, Glee Club, Student Council—Secretary 35-36, Journalism Club, Astronomy Club, Senior Play.

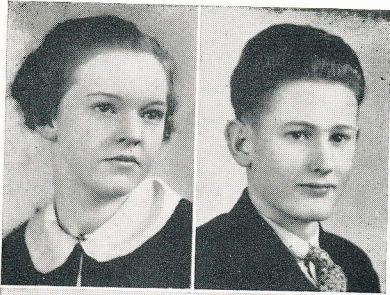
**CHARLES EDGAR RIGGS**  
"Rusty"

Senior Play.

**IMOGENE MARIETTA FREEMAN**  
"Imogene"

Choral Club, Home Economics Club.





MARY JANE McCULLEY  
"Mary Jane"

Girl Reserves, Press Club, Band, National Honor Society, Messenger Staff, Spotlight Staff.

PAGE DAMERON HUNT  
"Director"

Spotlight Staff, Messenger Staff, Band "2", "3", "4", Commercial Club.



NILE A. NEFF  
"Zeke"

Football 4 years, Hi-Y "2", "3", Astronomy Club "4".

MARTHA LEE GREER  
"Martha"

Commercial Club, Messenger Staff.



JACOB LAWRENCE SUTER  
"Jake"

Commercial Club, Astronomy Club.

VIRGINIA MARIE BATES  
"Bubbles"

Commercial Club, Literary Meet, Junior Play.



ROBERT EMMET EBBERTS  
"Bob"

Commercial Club, Student Council "1", "2".

GEORGE LOUIS EBBERTS  
"Boots"

Commercial Club.



MARIE EDITH RIEDEL  
"Marie"

Band—Treasurer 2 years; Messenger Staff, Home Economics Club, Girl Reserves.

EDWARD CLEMENT HRUSOVSKY  
"Eddie"

Band "2", "3".

HUNT

enger Staff,  
Commercial

REER

nger Staff.

ATES

ry Meet.

ERTS

DVSKY

SARAH JANE GATEWOOD

"Gatey"

Choral Club, Home Economics Club,  
Girl Reserves Club, Junior Play, Class  
President "2".

RUDOLPH PETER HODULIK

"Ginny"

Football, Marnoc Club, Basketball.

ROY FRANCIS POLLOCK

ELLEN ELIZABETH REECE

"Ellen"

Girl Reserves, Home Economics Club,  
Choral Club, Junior Play.

JOHN EDWARD LAPPERT

"Frankenstein"

CARL ALVIN WEINBRECHT

"Gus"

Choral Club "3".

STANLEY C. LYDZINSKEY

"Steamboat"

Band "2", "3", "4".

FRANCES KLEINEDLER

"Frances"

Astronomy Club, Commercial Club.

MARY ELIZABETH CLAYTON

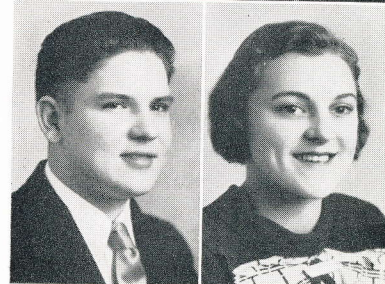
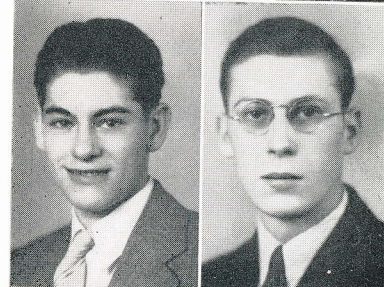
"Libbie"

Spotlight Staff, Band "2", "3", "4",  
Girl Reserves, Astronomy Club,  
Choral Club.

ANDREW J. MACEK

"Andy"

Band "2", "3", "4".



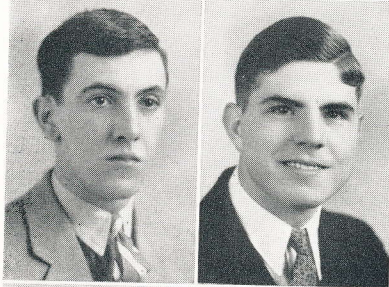


ELLEN ROSE SUTER  
"Ellen"

Girl Reserves, Astronomy Club, Choral Club.

STEVE JOE KOCHALKA  
"Stinky"

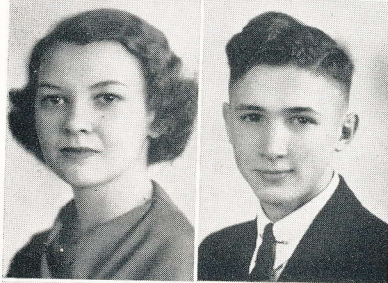
Basketball Manager, Marnoc Club, Messenger Staff.



JOSEPH R. TRACEY  
"Joe"

JAMES WILLIAM BUZAS  
"Jimmie"

Football.



MARY VIRGINIA SMITH  
"Virginia"

National Honor Society, Junior Play, Girl Reserves—Treasurer "36", Commercial Club, Glee Club, Treasurer of Freshman Class "32", Senior Play.

JOHN J. PERKOVICH  
"Perky"

Press Club, Junior Class—Secretary, Band, Spotlight Staff, Messenger Staff, Hi-Y Club, Class Basketball, National Honor Society.



ARTHUR JAMES DUNHAM  
"Clark"

MILDRED RITA SMITH  
"Smitty"

Commercial Club, Girl Reserves, Choral Club, Junior Play.



OLA MARGARET MILLER  
"Ola"

Girl Reserves Club, Choral Club, Messenger Staff, Home Economics Club, Junior Play.

HOWARD MAGER  
"Fu"

CHALKA

Marnoc Club,

BUZAS

OVICH

Secretary,  
Messenger  
Basketball,

MITH

Reserves,

ER

WILLIAM WOODROW ESSIG  
"Bill"  
Band "2", "3".

SYLVIA MARY APREA

PAUL M. KRIZANEK  
"Paul"  
Student Council "1", "2".

MARGARET ELIZABETH WORKMAN  
"Marg"  
Girl Reserves, Commercial Club,  
Messenger Staff, Student Council—  
Secretary "33-34".

NELSON WALLACE BURCH

IRIS GERTRUDY SNYDER  
"Windy"

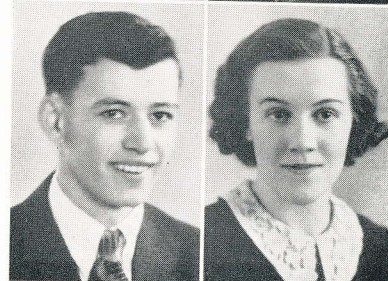
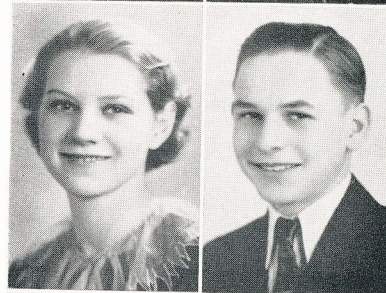
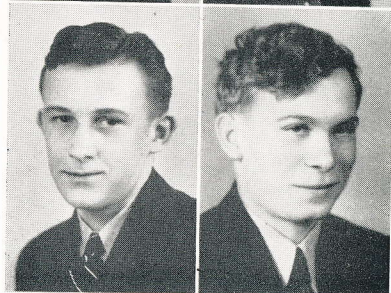
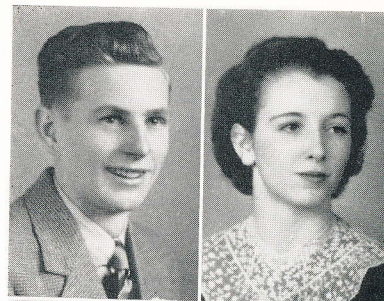
Girl Reserves, Astronomy Club, Home  
Economics Club, Senior Play, Spot-  
light Staff, Choral Club.

JOSEPH BERNARD GULDAN  
"Joe"

CHARLES DALE MORRIS  
"Chuck"

JOHN JAMES SABO  
"Sabo"  
Student Council "3", "4".

JUNE ELIZABETH NIEBERGALL  
"June"  
Girl Reserves, Journalism Club, Spot-  
light Staff.





STEVE GEORGE BUDISCOK  
"Stef"



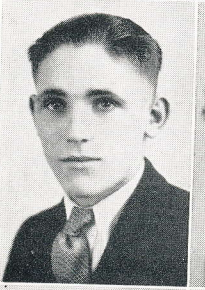
FLORENCE KRALOVICH



ANN AGNES RODGERS  
"Ann"



MARGUERITE C. CRAIG  
"Craig"



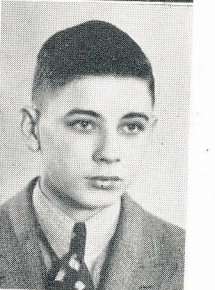
Girl Reserves, Journalism Club, Commercial Club, Band, Concert Band, Choral Club.



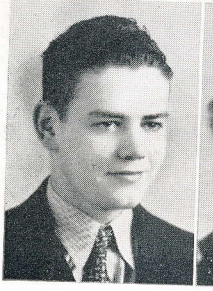
Commercial Club, Girl Reserves, Astronomy Club, Home Economics Club, Choral Club.



JOSEPH CHARLES BALGO  
"Joe"  
Choral Club "3".



OLGA THERESA SHIPIC  
"Olga"  
Commercial Club.



HELEN MARIE HRUSOVSKY  
"Flossie"  
Band "2", "3", Commercial Club, Astronomy Club.



RALPH WILLIAM TRIBETT  
"Ralph"  
Commercial Club.

KARL BARKER  
"Karl"  
Astronomy Club.

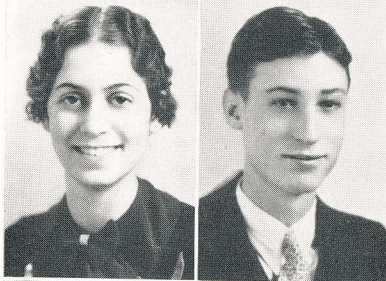
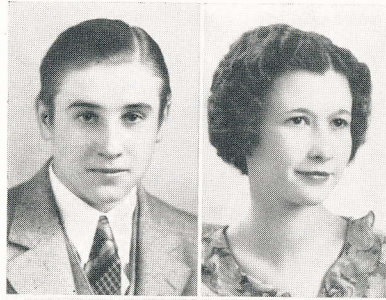
MILDRED MARIE DOWLER  
"Millie"  
Commercial Club, Messenger Staff, Class Treasurer "2".

ALFRED JOSEPH LEDZINSKEY  
"Al"

Band

MARY PATRICIA MARCHANI  
"Pat"

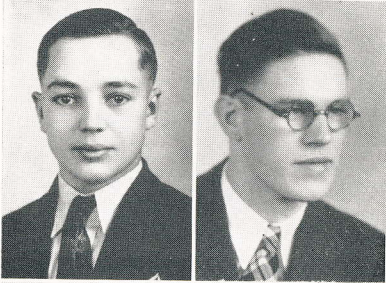
Girl Reserves, Commercial Club,  
Choral Club,



RUTH ELIZABETH WILSON  
"Ruth"

Spotlight Staff, Girl Reserves, Band,  
Choral Club.

ELSWORTH FISHER  
"Red"

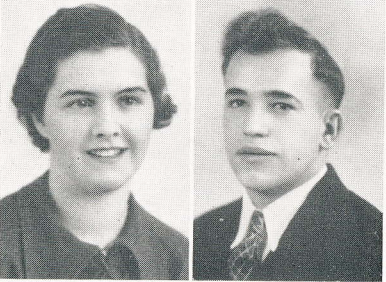


JOHN PETER SHIMEK  
"Shoemake"

Spotlight Staff, Girl Reserves, Band,  
Choral Club.

JAMES LA MONT O'BRIEN  
"J. J."

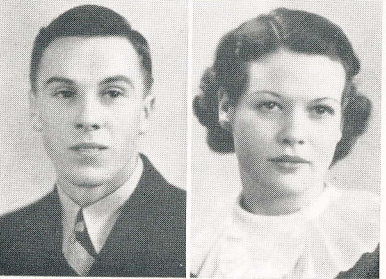
National Honor Society, Marnoc Club  
—Secretary, Press Club, Choral Club,  
Spotlight Staff, Messenger Staff,  
Junior Play, Senior Play.



MILDRED HELEN HUPP  
"Huppe"

Commercial Club, Press Club.

HENRY F. KUBECK  
"Kubeck"



IRWIN BLACK  
"Bud"

aff,

WILMA NAOMI RHODES  
"Wilma"  
Astronomy Club.